

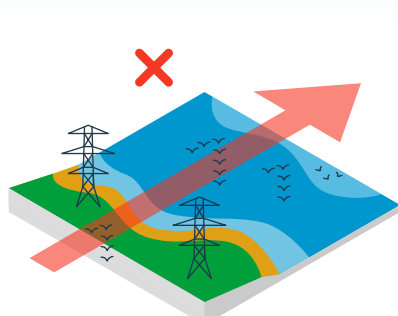
# High-voltage Infrastructure

Our projects offer us opportunities to increase biodiversity and strengthen the natural environment. Ecological Design Principles (EDPs) help designers systematically integrate nature into projects. The EDPs make it possible to create designs that benefit both people and nature in a feasible and practical manner. Because our projects vary in terms of their phasing and scale, the application and impact of the EDPs also differ. In this series of visualisations, we show how each project can help strengthen the ecosystem through the use of the EDPs.

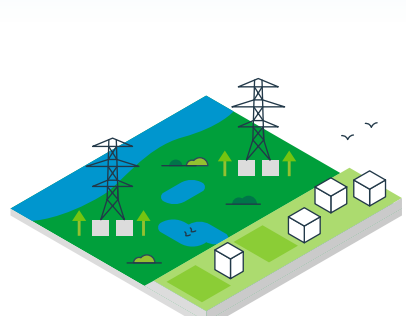
High-voltage infrastructure forms an extensive **network** that traverses **various landscapes and habitats**. It is precisely these connections that offer opportunities to strengthen nature and biodiversity by creating an ecologically sympathetic environment **at ground level** beneath the **high-voltage power lines**.



**Take nature into account when placing new pylons and substations.** Do not place pylons and substations in existing nature reserves or near features of high ecological value, such as ponds, copses and hedgerows.



**Prevent unnecessary wildlife casualties.** Power-line-related casualties can be prevented by strategically positioning the pylons. Avoid crossing major avian flight paths and foraging and resting areas.



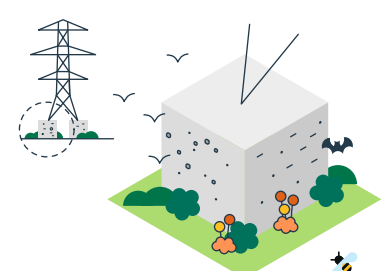
**Ensure that the design of the pylon base does not have a negative impact** on the soil and water. For example, raise the pylon base if it is situated in the floodplains, so that the landscape retains its natural function.



**Position the route strategically in areas where there are opportunities for nature enhancement.** By linking regional nature conservation objectives to the energy transition, nature can be strengthened locally along the route. Restoring a stream's natural course is an example of this.



**Use the network of pylons to create a robust ecological corridor.** Use the land beneath the pylon route to create a naturally structured corridor of the highest possible ecological value. This can help enhance and interconnect (nature) areas. The Lizard Lane (Utrecht) is a good example.



**Design the pylon base and the substation as nature-inclusive structures.** For example, by incorporating functional elements such as sand martin nesting walls into the design of the pylon base. A [list](#) with examples of nature-inclusive measures is available for high-voltage substations.