

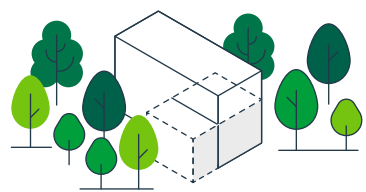
Urban Design



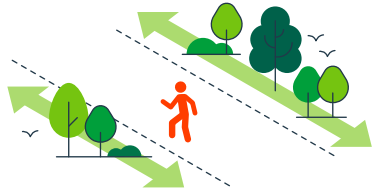
Our projects offer us opportunities to increase biodiversity and strengthen the natural environment. Ecological Design Principles (EDPs) help designers systematically integrate nature into projects. The EDPs make it possible to create designs that benefit both people and nature in a feasible and practical manner.

Because our projects vary in terms of their phasing and scale, the application and impact of the EDPs also differ. In this series of visualisations, we show how each project can help strengthen the ecosystem through the use of the EDPs.

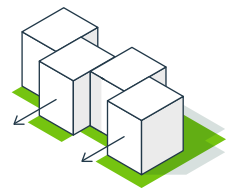
In urban design, a project typically encompasses an **entire area with a varied urban landscape**. An explicit focus on nature in the design, both in **public spaces** and in **buildings**, results in **enhanced spatial quality for people and nature**.



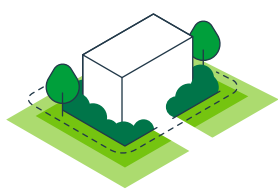
Retain as many existing trees as possible in the design to benefit immediately from a mature green structure.



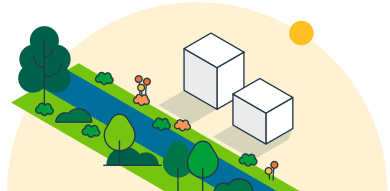
Designate quiet areas and disturbance-free zones to create safe havens where plants and animals can thrive undisturbed.



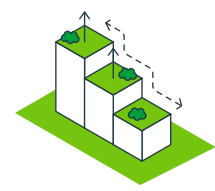
Use staggered offsets in the building line for variation and to provide space for a greater diversity of plants and animals.



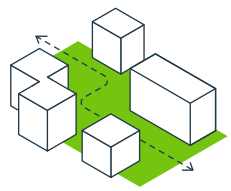
Surround blocks of buildings with greenery to seamlessly integrate the built environment with nature and allow residents and visitors to enjoy a richer biodiversity.



Make sure the nature-friendly riverbank lies in the sun. In the Netherlands, the northern bank gets the most sunshine.



Create variations in height in buildings that blend in with the surrounding area, forming 'steps' and making roofs accessible as habitats for insects and other animals.



Maximise contiguous green spaces and prevent fragmentation, to allow animals and plants to move and spread from one part of the city to another.



Incorporate different gradients in the design, for example by varying ground levels and plant heights, to create a dynamic and diverse environment that attracts and supports a wide range of plant and animal species.