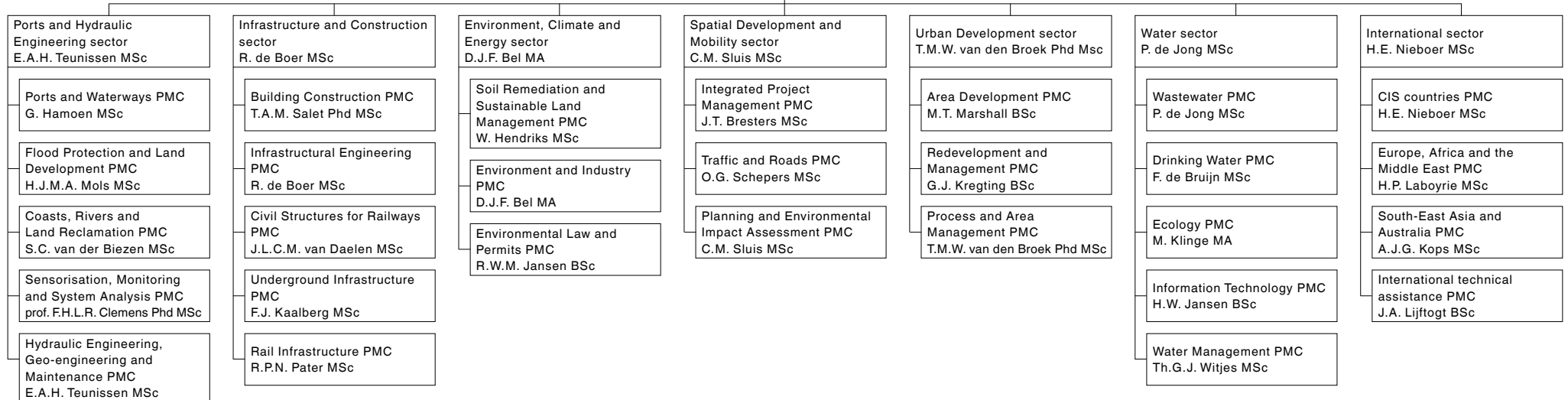


**Board of Directors**

H.A.A.M. Webers MSc  
H.E. Nieboer MSc



**Dutch offices**

Almere  
J.N. de Koning MA BSc

Maastricht  
R.A.R.O. Zanetti MSc

Amsterdam  
P.T.W. Mulder MA BSc

Rotterdam  
K.A. Haans MSc

Breda  
E.M.M. Castelijjn MSc

The Hague  
A.H. Deekens BSc

Heerenveen  
R.P. Herrema MSc

**International offices**

Belgium (Antwerp)  
S. De Roos MBA MSc

Latvia (Riga)  
J.M.W. Akkerman BSc

Indonesia (Jakarta)  
E. Buter MSc

Russia (St Petersburg)  
A.G. Joling MSc

Kazakhstan (Aktau)  
K. de Brabander MSc

Vietnam (Ho Chi Minh City)  
H.O. Kriele MSc

Kazakhstan (Almaty)  
G. Wissink BSc

Kazakhstan (Atyrau)  
W.F. Slotema MSc

**Support departments**

General Affairs  
M. Engelberts

Finance and Accounting  
J. Hinnen

Legal Affairs  
J.J.M. van Gessel LLM

Quality Affairs  
E. van Amelsvoort BSc

Personnel and Organisation  
W.P. Boomgaard MA

**Witteveen+Bos**  
Van Twickelostraat 2  
P.O. Box 233  
7400 AE Deventer  
the Netherlands  
t +31 570 69 79 11  
f +31 570 69 73 44  
e [info@witteveenbos.nl](mailto:info@witteveenbos.nl)  
i [www.witteveenbos.com](http://www.witteveenbos.com)